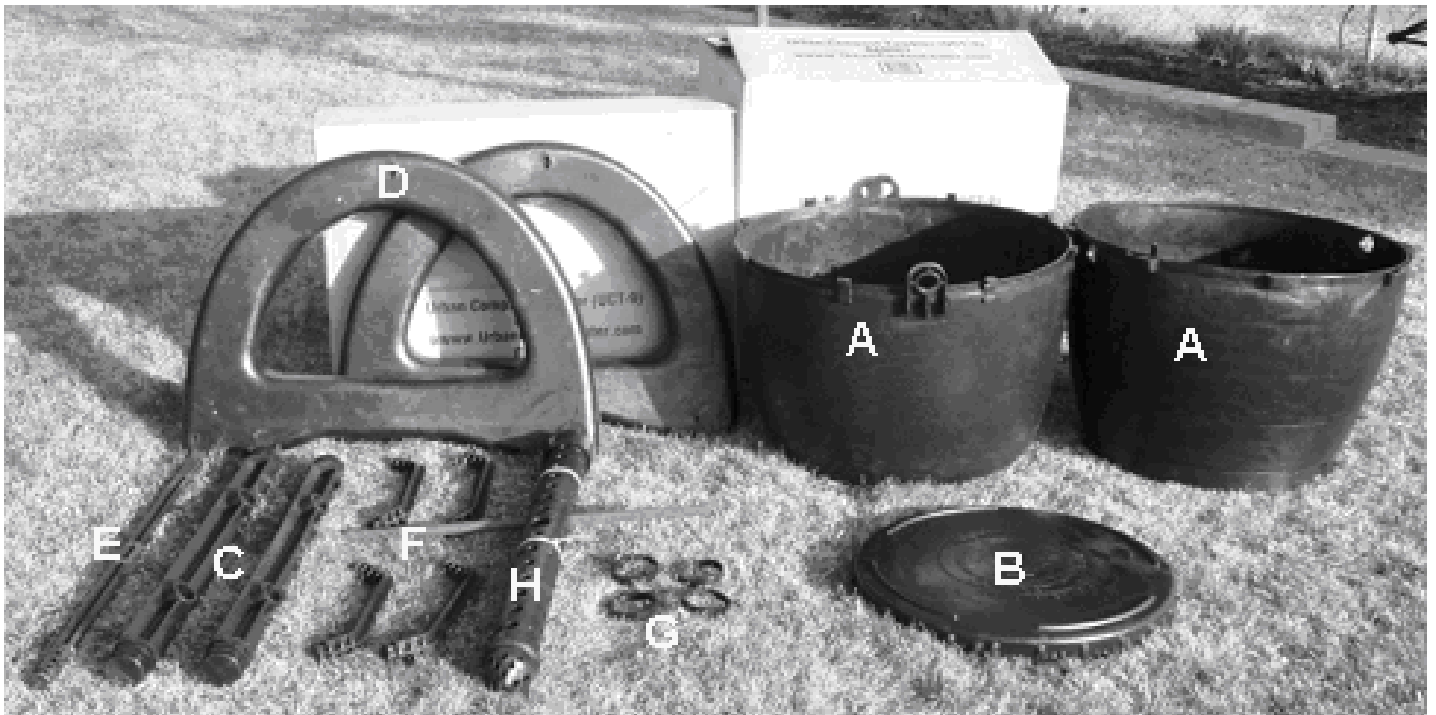


Assembly Instructions: Urban Compost Tumbler (UCT-9)

www.UrbanGardenCenter.com



Parts:

A- (2) Barrel Halves

H- Aeration Tube Assembly

B- (1) Barrel Lid

(2) Aeration Tube Halves snapped together

C- (2) Stand Supports

(2) Ty-Wraps

D- (2) Stand Halves

(1) Dome Cap

E- (1) Pivot Rod

(1) Breaker Bar

F- (4) Gusset Braces

G- (4) Retainer Rings ← [Are usually already installed on Stand Halves and not loose in the box.]



Check and be sure the aeration tube has been snapped together, secured with two Ty-Wraps, the cap is snugged down and the breaker bar inserted.

Insert the aeration tube assembly into the bottom half of the barrel.



The barrel halves use a tongue & groove connection. Be sure to coat the tongue (lip) on the bottom half of the barrel with vegetable oil, soap, or Vaseline, otherwise assembly will be much more difficult. Align the barrel halves as shown here on the left. Align and insert each latch as seen here on the right and then work the tongue & groove together so it is securely seated all the way around the barrel. This may take working around the unit several times for it to seat properly.



The barrel halves must be rotated and locked together. The seam has a snug fit to minimize leakage so this step will take some patience. Making sure the barrel halves are fit together with the locking lugs fully inserted, begin working the top half of the barrel clock-wise to securely lock the halves together. Some people can do this by hand, but because of the snug fit, you may need to use a tool such as a screwdriver. It is important to be careful not to damage the unit with excessive pressure in one spot. Typically you will need to apply pressure to each locking lug in turn working your way around the barrel “several” times as shown above. The locking lugs should be in the position shown in the far right photo and the large Pivot Rod holes aligned. Sometimes it helps to use the handle of a screwdriver or the Pivot Rod itself in this hole to help rotate the barrel halves together in the final stage of locking the halves.

Note that sometimes the two barrel halves almost appear to not align making it more difficult to fit them together. Because of plastic shrinkage in the manufacturing cooling process, this can occur. It just means the seam will be fitting a little tighter... but it will still fit. The solution is to place the barrel halves in the sun for a couple hours to make the plastic more flexible. Place the top barrel half with the lid end on the ground. Then place the bottom barrel half inside the top half. Don't wedge the bottom into the top half but rest using its own weight (snug but not wedged). The added pressure of the bottom nested into the top half while it sits in the sun will cause to top half to expand slightly making assembly easier. Sometime just sitting the halves in the sun is enough without nesting the halves.



Lay one of the stand halves flat on the ground. Insert a Gusset Brace into a Stand Support. Place a Retainer Ring (large opening side down) over the end of the Support Bar, pressing the Support Bar and Gusset Brace into the stand. Be sure the Gusset Brace and Support Bar is pressed all the way into their sockets. **NOTE: Usually the Retainer Rings are not loose in the box, but pressed onto the Stand Halves already.**



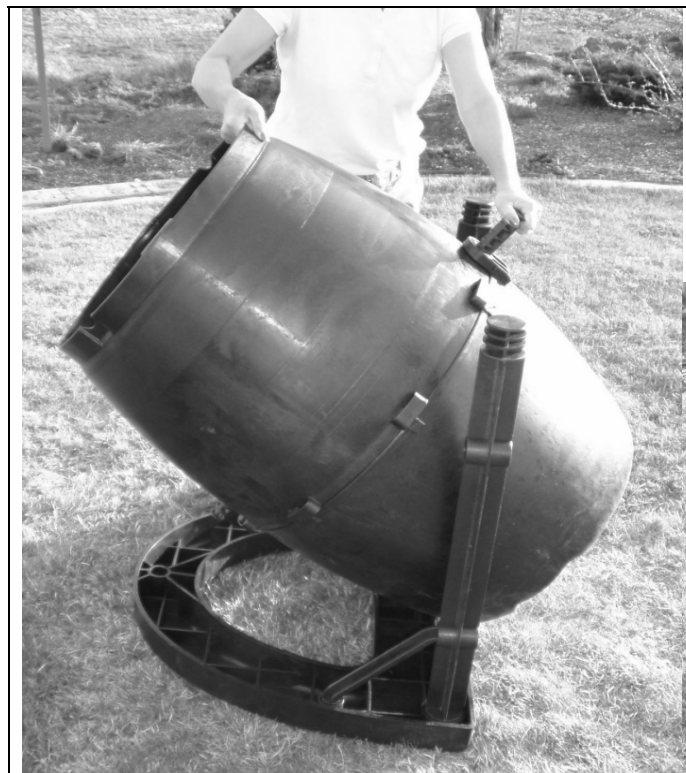
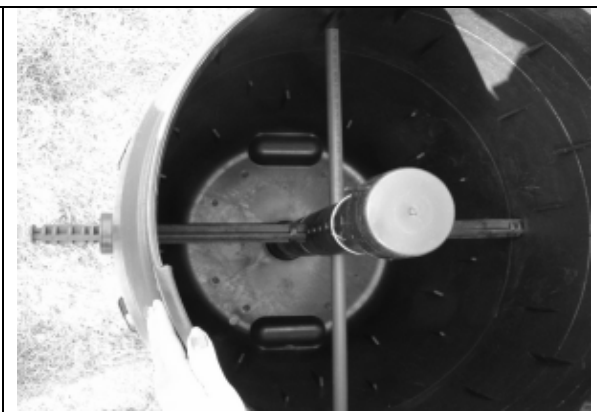
Insert the same assembly on the other side of the stand. Make sure the locks in the Stand are fully engaged in the Stand Supports. Then check to see the Retainer Ring is securely seated. There is a ridge or bump on the Stand Support itself that should be helping to lock this ring in place.



Your assembly should now look like this.



Press the Pivot Rod through the barrel halves and through the Aeration Tube.



Keeping the Pivot Rod extended several inches on both sides of the barrel, insert the Pivot Rod into the upper portion of the Stand. Once aligned, firmly press down making sure the Pivot Rod locks into the Stand.



Insert the Gusset Braces and Retainer Rings on the Support Bars as shown. Be sure the Retainer Ring has the large open side up to fit over the socket in the Stand.



Align the second Stand Half with the Pivot Rod, both Gusset Braces, and both Stand Supports. At first, gently align all of these parts with the appropriate holes being careful not to damage the Retainer Rings. Just let the Stand Half rest in place. Then by hand, press the Retainer Rings up into place over the Stand sockets. Now firmly press down on the Stand making sure all of the components are inserted with their locks fully engaged.

Stand the unit upright and prepare to put the lid on.

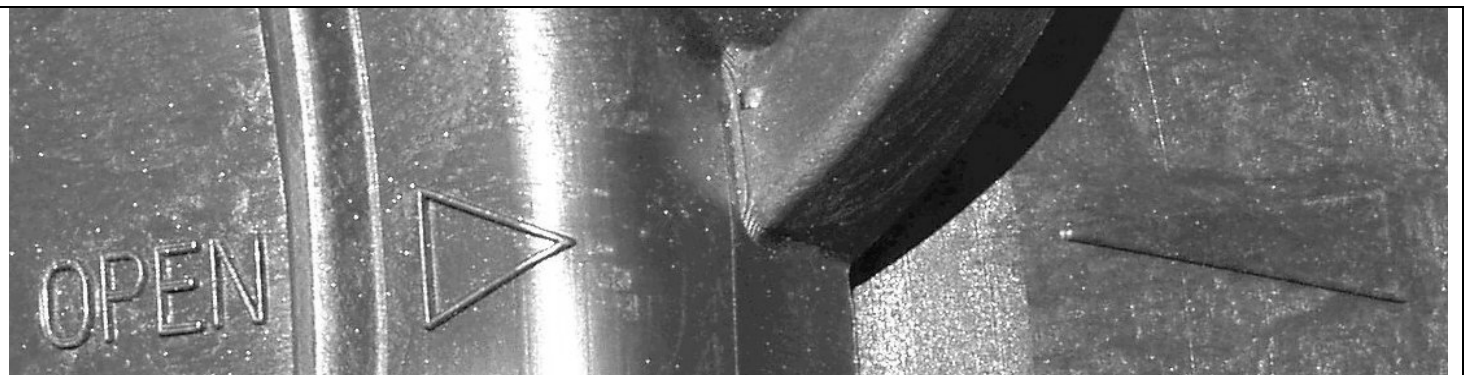
Looking at the top of the lid.



Place the lid on the unit by using the aligning arrows. Notice there is three (3) settings marked on the lid **OPEN**, **VENT**, and **CLOSED** with an aligning arrow to the right of each (shown on left here).

Notice there is an aligning arrow on the upper barrel half (shown on the right here). To put the lid on or take it off, be sure to align these aligning arrows in the **OPEN** position. Rotate it to the **CLOSED** position to tumble (turn) the unit as it prevents material from coming out of the vents that are under the lid. After tumbling, turn the lid to the **VENT** position so air can circulate while it is just sitting. If you do not keep it in the **VENT** position, composting will be slower.

Looking at the side of the barrel.



This is an example of how the arrows need to align in the **OPEN** position to either put the lid on or take it off.

Urban Compost Tumbler (UCT-9)



D&P Industries, Inc.
1514 SW Highland Ave, Suite C
Redmond, OR 97756
541 923-1992
DPI@UrbanGardenCenter.com
www.UrbanGardenCenter.com